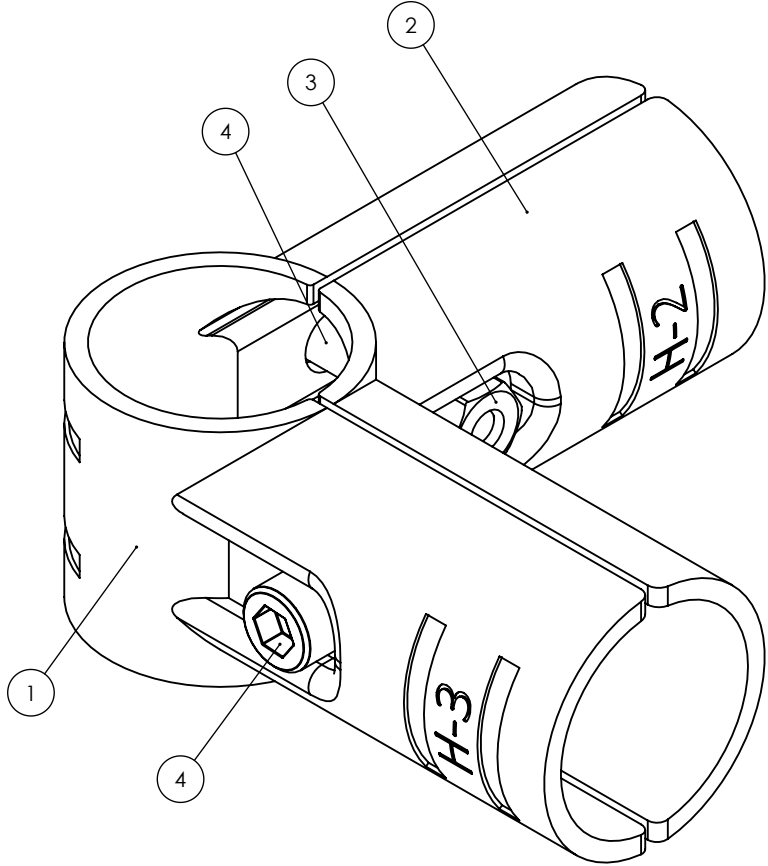


ITEM NO.	PART NUMBER	DESCRIPTION	QTY.
1	FTB-H-3	28mm dia. joint part, forms 4 pipe intersection or corner, black.	1
2	FTB-H-2	28mm dia. joint part, forms 4 pipe intersection or corner, black.	1
3	M6-Nut	M6 joint hex nut, black.	2
4	M6X25-SCREW	M6 x 25mm, socket head cap screw, black.	2



137 SYKE STREET, ROCHESTER, NY 14611
585-464-8470, WWW.FRAMINGTECH.COM

UNLESS OTHERWISE SPECIFIED THE FOLLOWING SPECIFICATIONS APPLY:

X	ENGLISH - DIMENSIONS WHEN BOX IS CHECKED.			
	WHEN DECIMAL PLACE IS	.XX	.XXX	.XXXX
	UNITS = INCHES	.01	.005	.0005

X	METRIC - DIMENSIONS WHEN BOX IS CHECKED.			
	WHEN DECIMAL PLACE IS	.X	.XX	.XXX
	UNITS = MILLIMETERS	0.3	0.13	0.013

ANGULAR ± 1°

PROPRIETARY AND CONFIDENTIAL

THE INFORMATION CONTAINED IN THIS DRAWING IS THE SOLE PROPERTY OF FRAMING TECHNOLOGY INCORPORATED. ANY REPRODUCTION IN PART OR AS A WHOLE WITHOUT THE WRITTEN PERMISSION OF FRAMING TECHNOLOGY INCORPORATED IS PROHIBITED.

LAST DATE PRINTED ON: 8/21/2025

INTERPRET GEOMETRIC TOLERANCING PER:

MATERIAL

FINISH



3RD ANGLE

DO NOT SCALE DRAWING

NAME

FTI

DATE

08/21/2025

TITLE: 28mm dia. joint #2

SIZE

B

DWG. NO.

FTB-HJ-2

REV

-

SCALE: 1.25:1

WEIGHT:

SHEET 1 OF 1

FILEPATH: \\FTISERVER\Office\FT-CAD Part Files\The Can\1 - Catalog Parts\Parts\Framing Tube\Connection Joints\Solidworks Drawing Files\FTB-HJ-2