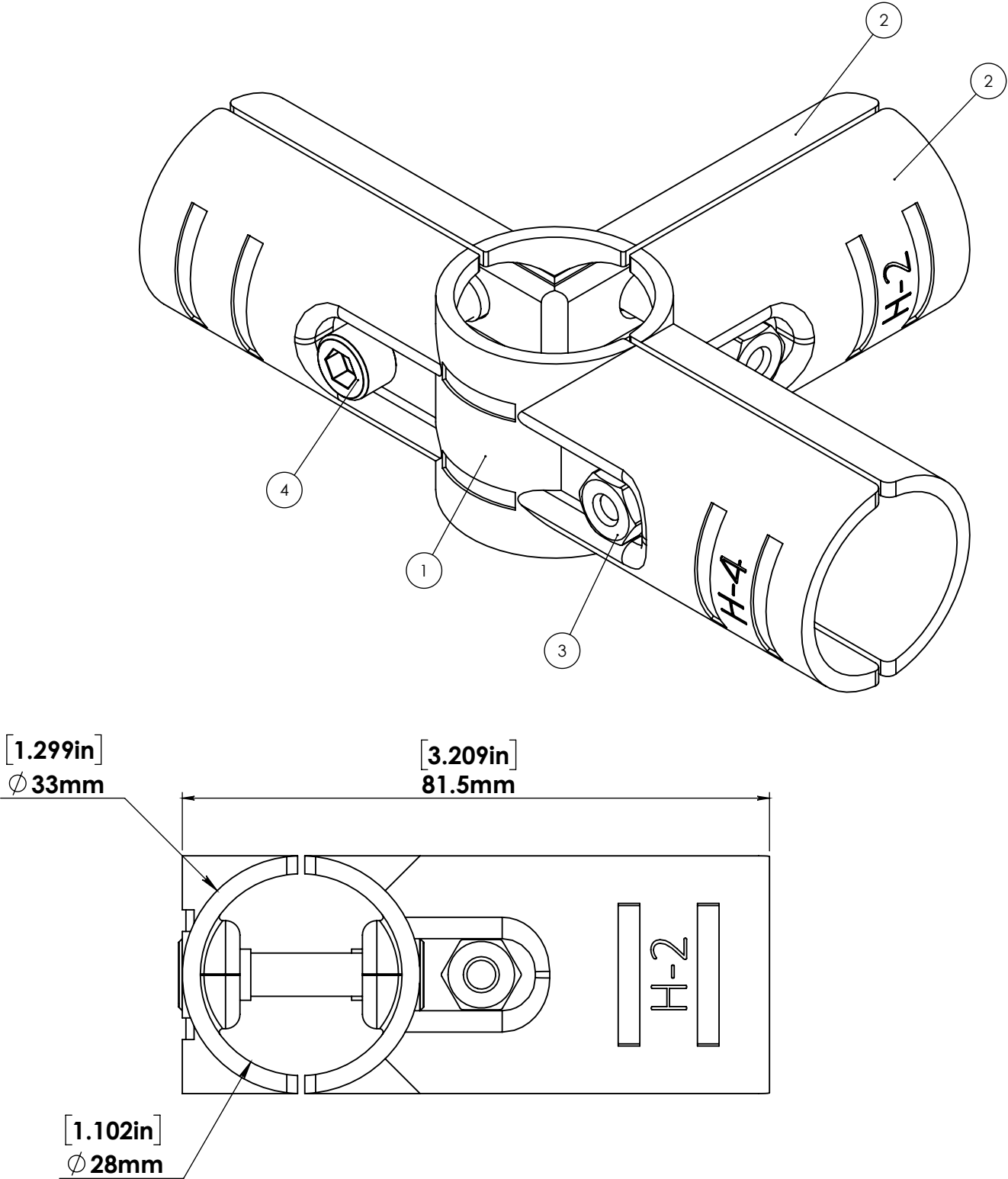


ITEM NO.	PART NUMBER	DESCRIPTION	QTY.
1	FTB-H-4	28mm dia. joint part, forms 3 pipe intersection, black.	1
2	FTB-H-2	28mm dia. joint part, forms 4 pipe intersection or corner, black.	2
3	M6-Nut	M6 joint hex nut, black.	3
4	M6X25-SCREW	M6 x 25mm, socket head cap screw, black.	3



137 SYKE STREET, ROCHESTER, NY 14611  
585-464-8470, WWW.FRAMINGTECH.COM

UNLESS OTHERWISE SPECIFIED THE FOLLOWING SPECIFICATIONS APPLY:

X

ENGLISH - DIMENSIONS WHEN BOX IS CHECKED.

WHEN DECIMAL PLACE IS	.XX	.XXX	.XXXX
UNITS = INCHES	.01	.005	.0005

X

METRIC - DIMENSIONS WHEN BOX IS CHECKED.

WHEN DECIMAL PLACE IS	.X	.XX	.XXX
UNITS = MILLIMETERS	0.3	0.13	0.013

ANGULAR ± 1°

PROPRIETARY AND CONFIDENTIAL

THE INFORMATION CONTAINED IN THIS DRAWING IS THE SOLE PROPERTY OF FRAMING TECHNOLOGY INCORPORATED. ANY REPRODUCTION IN PART OR AS A WHOLE WITHOUT THE WRITTEN PERMISSION OF FRAMING TECHNOLOGY INCORPORATED IS PROHIBITED.

LAST DATE PRINTED ON: 8/21/2025

INTERPRET GEOMETRIC TOLERANCING PER:

MATERIAL

FINISH

3RD ANGLE

DO NOT SCALE DRAWING

NAME

DATE

DRAWN

FTI

08/21/2025

CHECKED

ENG APPR.

MFG APPR.

Q.A.

TITLE: 28mm dia. joint #3

SIZE

DWG. NO.

REV

B

FTB-HJ-3

-

SCALE: 1.25:1

WEIGHT:

SHEET 1 OF 1

FILEPATH: \\FTISERVER\Office\FT-CAD Part Files\The Can\1 - Catalog Parts\Parts\Framing Tube\Connection Joints\Solidworks Drawing Files\FTB-HJ-3